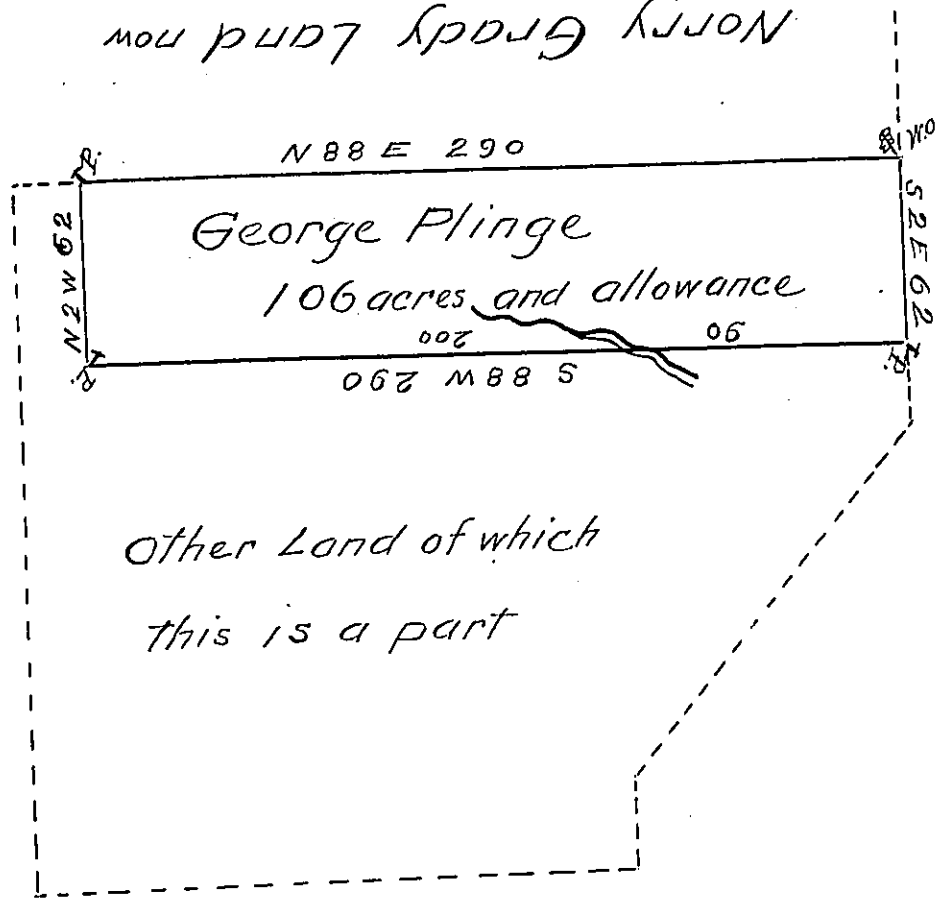


George T. Crawford
NORTH GRADY LAND NOW



Montgomery & Stewart Land
at Kishaminatis old town
now Charles Bovards

A Draught of part of a tract of Land survey—on
the 26th day of April 1770 for George Plinge on his
Order No 2653 ^{dated 3^d Apl. 1769} Containing one hundred and six a-
eres with an allowance of six P Cent Situate in Alle-
gheny Township in the County of Westmoreland sur-
vey^d September 13th 1822

P-Isaac Moore D.S.

Samuel Cochran Esquire }
Surv^r Gen^l. of Penn^a }

IN TESTIMONY that the above is a copy of the original remaining on file in
the Department of Internal Affairs of Pennsylvania, made
conformably to an Act of Assembly approved the 16th day of
February, 1833, I have hereunto set my Hand and caused
the Seal of said Department to be affixed at Harrisburg,
this twenty third day of May 1904.

Isaac P. Pearson
Secretary of Internal Affairs.